



FIRSTBREW

Firstbrew

Compact brewhouse 10-20HL







# FIRSTBREW

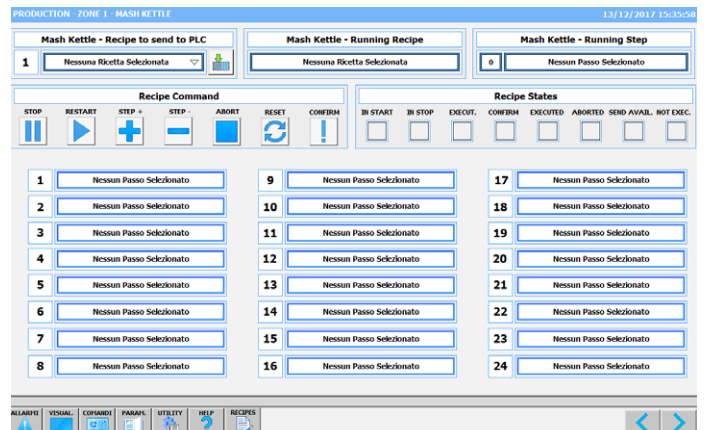
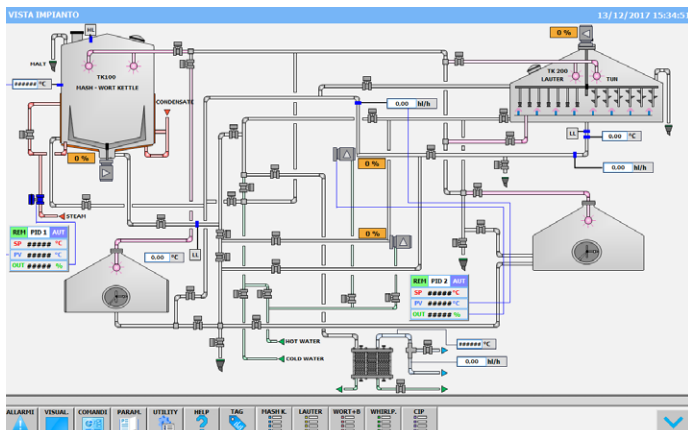
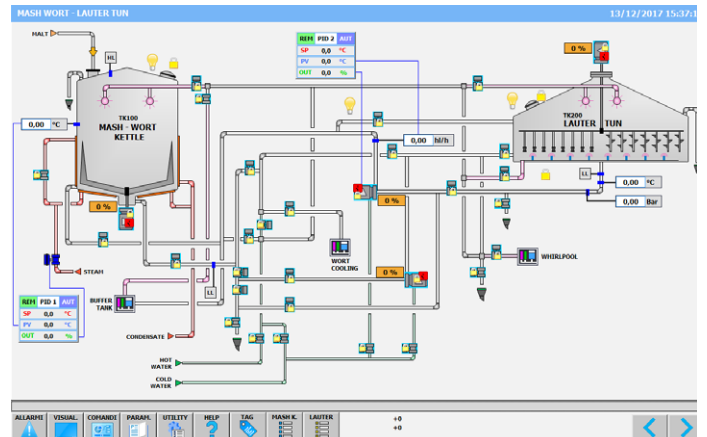
## Overview

FIRSTBREW originates from CFT Group's continued desire to produce a sophisticated range of products, similar to that which CFT provides for large industrial plants, only on a scaled down version for small/medium sized breweries. This allows us to provide machine and equipment at competitive market prices but a higher level of technology.

- > **COMPACT:** Reduced footprint (20 M<sup>2</sup>), while maintaining very high production standard.
- > **MODULAR:** Ergonomic solution thanks to vertical structure implementation.
- > **AUTOMATIC:** High degree of automation.
- > **VERSATILE:** Different configurations available.
- > **HIGHLY PERFORMING:** From 5.000 HL up to 30.000 HL per year.
- > **PLUG AND PLAY:** Complete turnkey system.



# FIRSTBREW MAIN TECHNICAL FEATURES



- > Suitable for limited space and easy to install thanks to the monoblock design.
- > N.2 centrifugal pumps (1 primary pump, 1 dedicated to Lauter Tun).
- > Working time optimization thanks to the separate Whirlpool and product buffer tank.
- > Modularity and expandability with optional section.
- > Reduced time for assembly and installing.
- > Performing: 1 brew in 8 hours, 2 brews in 11 hours, 3 brews in 14 hours, 6 brews in 24 hours (with standrd beers).
- > High level of automation supported by dedicated software.





# COMPOSITION

The brewhouse is composed of four vessels, designed in a two by two format: a mash/kettle tun with product buffer on the bottom and a lauter tun with whirlpool on the bottom.

FIRSTBREW is equipped with:

## Mash/kettle tun

- › Cylindrical shell, upper and lower conical bottom in AISI 304.
- › High efficiency slow stirrer for effective and uniform product heating and for gentle wort handling.
- › Independent heating jackets for a better distribution of steam on shell and on conical bottom .
- › Effective circuit for steam control and condensate discharge.
- › Internal washing system.

## Buffer tank

- › Cylindrical shell, upper and lower bottom in AISI 304.
- › Working time optimization.
- › Internal washing system.

## Whirlpool

- › Cylindrical shell, upper and lower bottom in AISI 304.
- › Effective removal of hot trub thanks to the machine specific design, having a large diameter to help trub settling.
- › Tangential wort inlet to create the forces necessary to get trub precipitation.

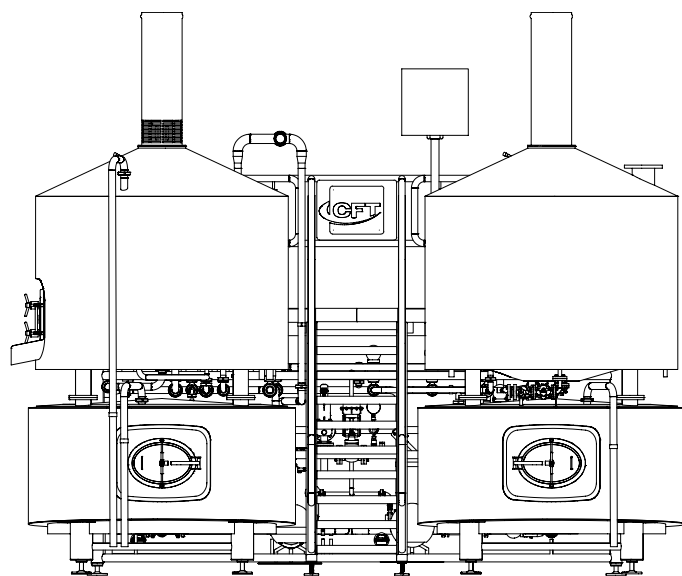
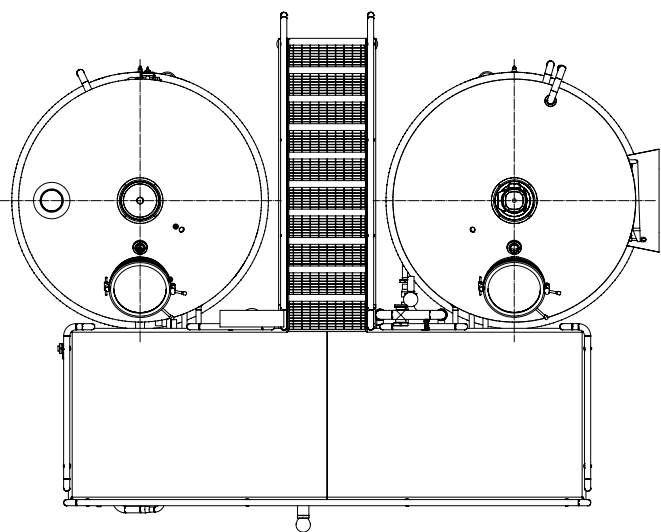
## Lauter tun

- › Cylindrical shell, upper conical bottom and lower flat bottom in AISI 304.
- › False bottom and filtering grid.
- › Efficient 2-arm rotating rake with central control system for a correct distribution and cut of the grains during filtration.
- › A flap connected with the rotating rake can be manually raised and lowered to push out the spent grains at the end of the filtration phase.
- › Internal washing device for sparging and to wash the lauter tun with water and washing liquid.





# TECHNICAL DATA



## FIRSTBREW

## TECHNICAL CHARACTERISTICS

Gravity	From 11° to 18° Plato
Maximum brew/day	6 Brews/day
Brews per week	6 to 30 Brews/week
Working days per week	5 Days/week
Production weeks per year	48 Weeks/year

## FIRSTBREW 10 HL

## FIRSTBREW 20 HL

Brewhouse weekly capacity (hot wort)	60 to 300 HL	120 to 600 HL
Brewhouse yearly capacity (hot wort)	2.880 to 14.400 HL	5.760 to 28.800 HL







LEADERS  
INNOVATE.

**CFT S.p.A**

Via Paradigna, 94/A - 43122 Parma - Italy

**f** **🐦** **📷** **in** **G+**

**[www.cft-group.com](http://www.cft-group.com)**